



2011 Brisbane Flood

Flood footprints and % flood area by postcode

An independent perspective on facultative and treaty damage and loss, based on Visual Business Intelligence

For further details contact:

Dr. Beverley Adams bj@ecityrisk.com

22 March, 2011

eCityRisk UK ☒ Communications House, 63 Woodfield Lane, Ashted, Surrey, KT21 2BT, UK ☎ +44 2081 239864
eCityRisk USA ☒ 400 Oceangate, Suite 1050, Long Beach, California, 90802, USA ☎ +1 562 628 1675



flood inundation and depth

- Flood footprint, % inundation by postcode, and per building damage (water depth)
- **Uses include:** Identifying impacted records, ground-up loss for treaty/D&F/binders, visuals for pre-claim damage assessment
- **Area:** Brisbane, Ipswich, Grantham, Toowoomba
- **LOB:** Commercial, industrial, residential
- **Exposure information:** NEXIS via Geoscience Australia.
- **Source data:**
 - » Aerial survey from helicopter
 - » Social media street view
 - » Google Earth pre-event images
- **Format:** GIS footprints for display in shapefile/kmz, geo-tagged photos, and database table containing locations

22 March, 2011



a) Overview of Flood Inundation Showing Affected Regions Following Queensland, Australia Floods (10-14 January 2011)



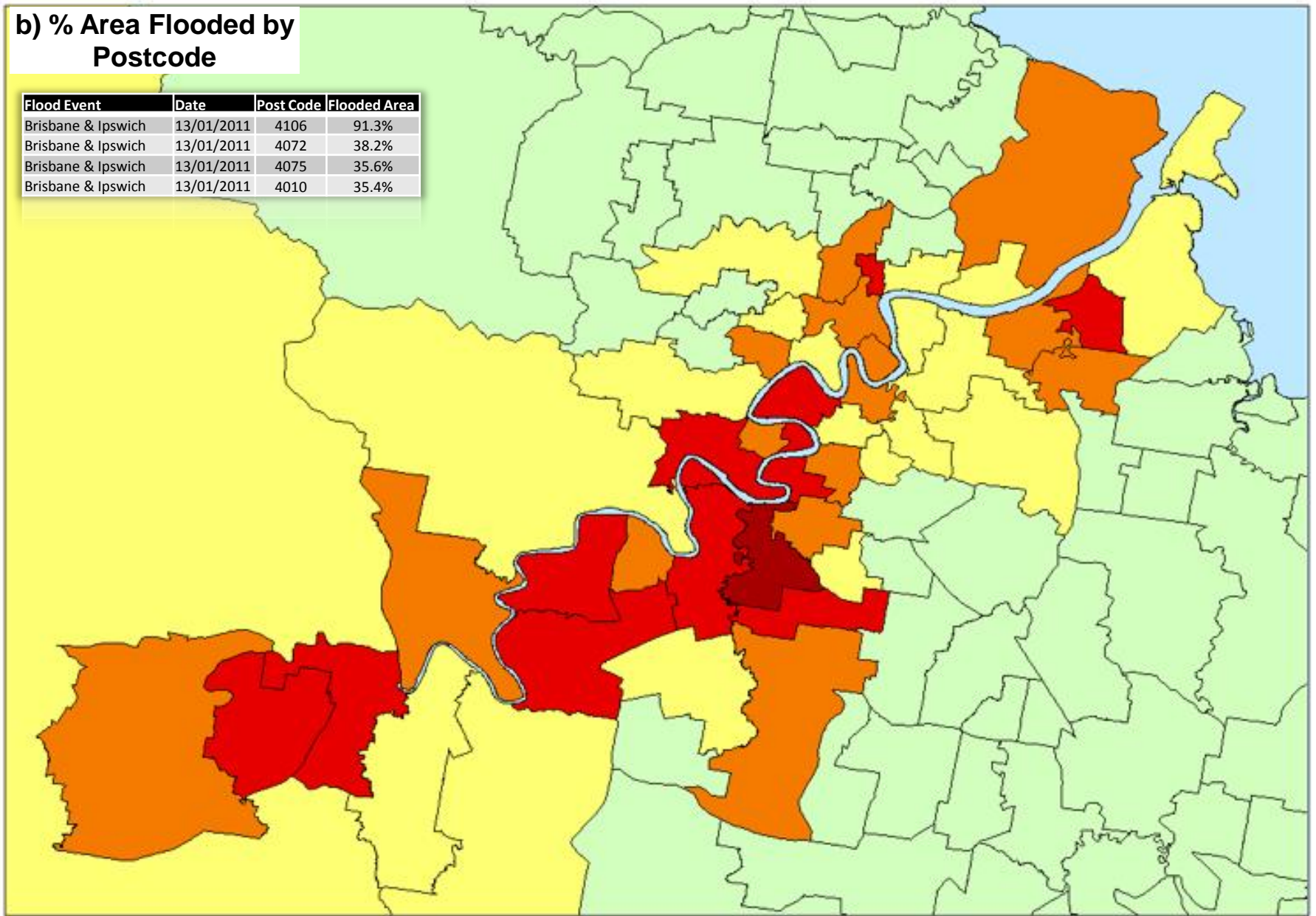
City affected	Dates	Details
Toowoomba	10/01/2011	Flash Flood 3 weeks rain + 6.3 inches in 36 hrs (Brisbane Times)
Grantham & Gatton	10/01/2011	Lockyer Creek 18.92 m (Gatton), 7 m (Grantham) (Courier Mail)
Ipswich	10/01/2011	Bremer River 19.4 m - 3000 homes flooded (Courier Mail)
Brisbane	13/01/2011	Brisbane River 4.46 m - 20000 homes flooded (ABC)



Data developed using multiple sources including modelled results, aerial images and photographs, and news reports. Map produced for A4 printing, and is for reference use only. No liability concerning use of this map is assumed by the producer. ©eCityRisk 2011

b) % Area Flooded by Postcode

Flood Event	Date	Post Code	Flooded Area
Brisbane & Ipswich	13/01/2011	4106	91.3%
Brisbane & Ipswich	13/01/2011	4072	38.2%
Brisbane & Ipswich	13/01/2011	4075	35.6%
Brisbane & Ipswich	13/01/2011	4010	35.4%

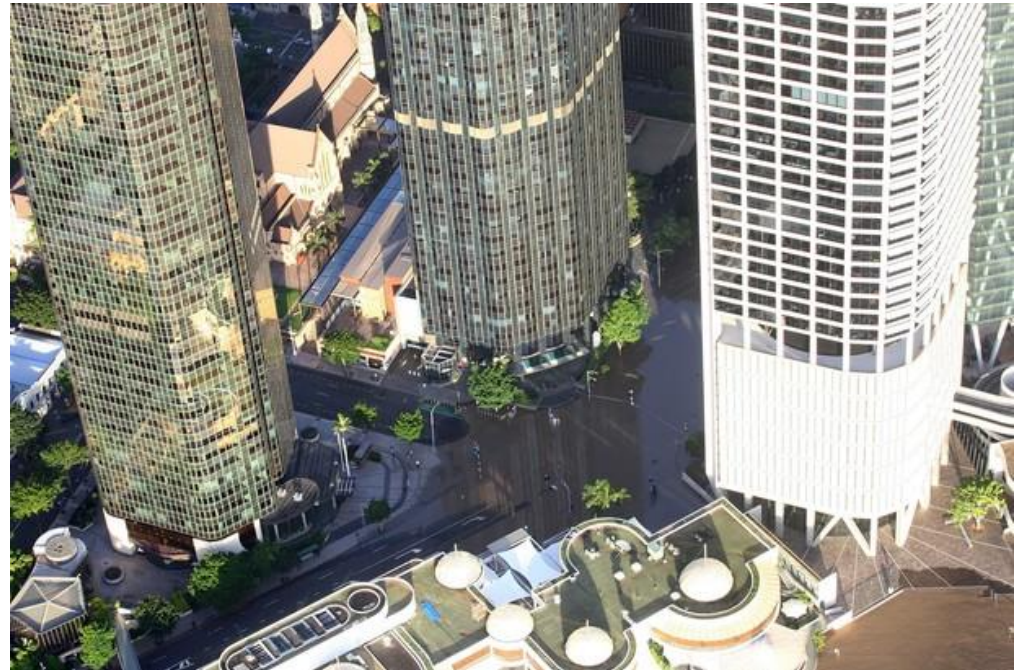


c) Visual Intel for specific risks



Riparian Plaza

- KPMG Accounting
- Wilson HTM investment group
- Clayton Utz law firm



22 March, 2011



Brisbane - Affected Landmarks



Convention & Exhibition centre and surrounding commercial area

22 March, 2011



affected Landmarks



Suncorp Stadium



22 March, 2011



Flood depth



12th Jan 2011



Pre-event



13th Jan 2011

22 March, 2011



Flood depth database



11th Aug 2009



12th Jan 2011



13th Jan 2011

22 March, 2011



Site_ID	Policy_No	Country	State	Postcode	Address	Flooded	No_Stories	Inferred_M
24679	TREATY594	Australia	Queensland	4305	5, Bottomley Street	0	0	0
24680	TREATY594	Australia	Queensland	4305	7, Bottomley Street	1	0	1
24681	TREATY594	Australia	Queensland	4305	9, Bottomley Street	1	0	1
24682	TREATY594	Australia	Queensland	4305	11, Bottomley Street	1	0	1
24683	TREATY594	Australia	Queensland	4305	13, Bottomley Street	1	0	1
24684	TREATY594	Australia	Queensland	4305	15, Bottomley Street	1	1	3
24685	TREATY594	Australia	Queensland	4305	17, Bottomley Street	1	1	3
24686	TREATY594	Australia	Queensland	4305	19, Bottomley Street	1	1	5
24687	TREATY594	Australia	Queensland	4305	21, Bottomley Street	1	1	4
24688	TREATY594	Australia	Queensland	4305	23, Bottomley Street	1	1	5

